



Cold Storage Solutions for all Sectors

Best Engineering Strength Totally Equipped with Knowledge For Large Operational Zone Accomplishment

WALK IN CHILLERS & FREEZERS



PANEL CONSTRUCTION

- Panels are manufactured with interior and exterior metal skins precisely formed to ensure proper size.
- Panel core is polyurethane foam, using non CFC propellant.
- For Chillers, Panel thickness is 60 mm and for freezers , it is 100 mm

INSULATION

- Insulation is done by rigid polyurethane foam.
- Density is 40 kg/m³ to 44 kg/m³
- K-factor is 0.133 BTU per hour /foot square/F⁰/inch
- Yield compression strength – 350 kg for floor, 200 kg for walls.

SECTION FASTENERS AND CONNECTORS

- Each device consist of a precisely located cam lock and steel pin.(wall to wall, wall to ceiling, wall to floor)
- All locks are actuated from inside the enclosure with a standard type Allen wrench.
- All access holes are to finished with vinyl caps on wall and ceiling panels on floor panels.

SECTION GASKET

- All panel sections have two rows of closed cell gasket attached to the top, bottom, and cam lock side of the panel, creating a self-sealing, air-tight joint.
- Gaskets are NSF approved vinyl extruded gasket.

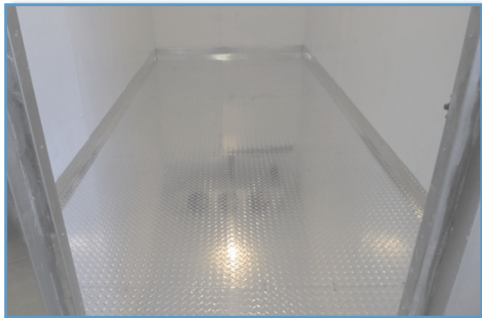


DOOR



DOORS

- Coolers and Freezer doors are of hinged and flushed type with a clear opening of 860 x 1980.
- Material: 0.50mm gauge stainless steel.
- Freezers doors are provided with strip heaters.
- Door finish matches with the panel finish both inside and out.
- Provide door locks of Kason Brand.
- Coolers and Freezers doors are provided with Kick plates of 610 mm height of No. 16 gauge stainless steel on both sides.
- Doors are having Built-in cylindrical lock, with cam lift-type self-closing door.
- Bottom of doors are provided with sweeping rubber wiper sealing gasket.



ACCESSORIES

- Panic Exit device operating from inside(Push Release Type).
- Pressure Relief Port
- See through strip curtain
- Vapour proof CFL Room light (300 Lux evenly distributed) IP-66 rated.
- Electrical Control Panel fitted on cold room panel.
- Both chillers and freezers have alarm system (optional).



FINISH

- Material and thickness of material:
 - Walls- Exposed: 0.50mm gauge Stainless steel of type 304 grade
Unexposed: 0.60mm gauge Precoated Galvanised steel
 - Ceiling-Exposed: 0.50mm gauge Stainless steel of type 304 grade
Unexposed: 0.60mm gauge Precoated Galvanised steel
 - Floor- Unexposed: 16 gauge Precoated Galvanised steel .

FLOORS

- Exposed Surface is Alluminium chequered plate .
- A plywood of ½” is placed below the Chequered plate.



REFRIGERATION

- Refrigeration units can be water cooled or air cooled.
- Ambient Temperature is 43°C ~ 45 °C considering approx 10 times the door is being opened and closed in 1 hour.
- Room Temperature range
 - For chillers: +2°C to +8°C and
 - For freezers: -20°C to – 25°C.
- Coolers have air defrost timer, Freezers defrost electric timer
- R404a - 230V-Ac/440V, AC,3pH, air cooled or water cooled outdoor condensing units for both chillers and freezers.
- The refrigerant gas is CFC Free and environmentally friendly.
- All the compressors are hermetically sealed type.
- Evaporator units are cubical type or slim type.
- Connection with BMS is also available



CNC FABRICATED PUFF PANELS WITH CAM LOCK SYSTEM



INTERIOR OF A COLD ROOM WITH EVAPORATOR UNIT & SHELVING



OUTDOOR UNITS



STORAGE OF MATERIALS IN COLD ROOM



Cold Storage Solutions Suitable for all Sectors

Regd Kol Office :
P-27, CIT Scheme No LXXII, Block-B
Gariahat Road (South), Kolkata-700031, India
Ph : +91-33-24236602, Mobile : +91-9836154724
E-mail : bestekLoza@gmail.com

Mumbai office :
Genesis House, Sector-06, Plot-27,
Koparkhairane,
Navi Mumbai - 400 706
Mob. : + 91 9930764628
Email Id.: west@bestekLoza.in

Saudi Arabia Office :
Zahrat Rinad Trading Co.
P.O.Box : 84841 Riyadh-11681,
Saudi Arabia
Mob. : + 966 50 002 6612

Factory :
Village Argori, Under Andul G.P.
(Opp. Alampur Fire Service Station)
P.S. Sankrail , West Bengal



BESTEKLOZA reserves the right to change technical details, prices and models without previous notice. All design rights are reserved. Reproduction or copying of the products in this catalogue either in full or in part is strictly forbidden without the prior permission of BESTEKLOZA